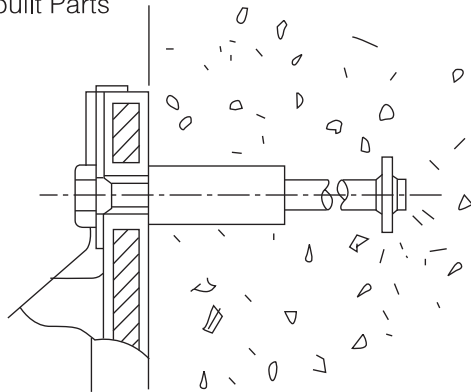
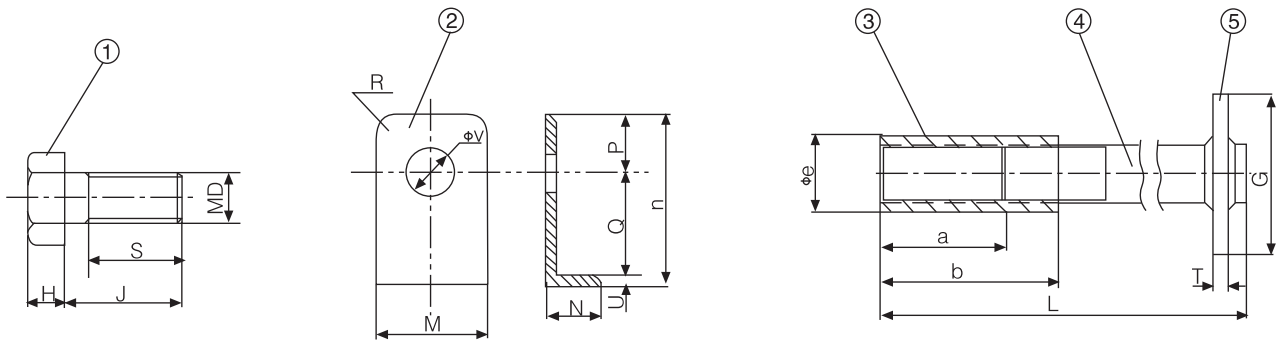


三、预埋件

Pre-built Parts



| 序号 No. | 名称 Name | 材质 Material | 数量 Qty |
|-----------|--------------------------|--|-----------|
| 1 | 螺栓 Bolt | Q235热镀锌,Q235 Hot-galv 1Cr13(2Cr13)1Cr18Ni9Ti, 0Cr17Ni12MO2 | 1 |
| 2 | 垫片 Washer | Q235镀锌 Q235 Hot-galv | 1 |
| 3 | 预埋螺母 Pre-built-in nut | 1Cr13(2Cr13) 1Cr18Ni9Ti 0Cr17Ni12MO2 | 1 |
| 4 | 地角杆 Foot rod | Q235 | 1 |
| 5 | 地角板 Foot board | Q235 | 1 |



规格

Specifications

| 规格 Specifications | ①螺栓 Bolt | | | | ②垫片 Washer | | | | | | | | ③预埋螺母 Pre-built-in nut | ④地角杆 Foot rod | ⑤地角板 Foot board | | | |
|----------------------|-------------|----|-----|-----|---------------|----|-----|----|-----|----|----|----|---------------------------|------------------|--------------------|----|-----|-----|
| | D | H | J | S | M | N | n | P | Q | U | V | R | a | b | e | T | L | G |
| 500H | M24 | 15 | 60 | 55 | 55 | 20 | 69 | 25 | 40 | 4 | 28 | 15 | 60 | 90 | 36 | 6 | 240 | 75 |
| 600H | M24 | 15 | 65 | 60 | 60 | 20 | 83 | 30 | 48 | 5 | 28 | 15 | 65 | 100 | 36 | 6 | 240 | 75 |
| 700H | M30 | 19 | 70 | 65 | 65 | 20 | 93 | 33 | 55 | 5 | 34 | 15 | 70 | 105 | 39 | 6 | 300 | 80 |
| 800H | M36 | 23 | 85 | 70 | 70 | 24 | 102 | 35 | 62 | 5 | 40 | 15 | 85 | 120 | 44 | 9 | 360 | 85 |
| 900H | M36 | 23 | 90 | 75 | 70 | 24 | 113 | 37 | 70 | 6 | 40 | 15 | 85 | 120 | 44 | 9 | 360 | 85 |
| 1000H | M42 | 26 | 95 | 85 | 85 | 26 | 126 | 43 | 77 | 6 | 46 | 25 | 95 | 125 | 59 | 9 | 420 | 100 |
| 1100H | M42 | 26 | 100 | 90 | 85 | 26 | 134 | 43 | 85 | 6 | 46 | 25 | 95 | 130 | 59 | 9 | 420 | 100 |
| 1150H | M42 | 26 | 100 | 90 | 90 | 28 | 142 | 46 | 90 | 6 | 46 | 25 | 95 | 130 | 59 | 12 | 420 | 100 |
| 1200H | M42 | 26 | 110 | 95 | 90 | 31 | 144 | 46 | 92 | 8 | 46 | 25 | 100 | 140 | 59 | 12 | 420 | 100 |
| 1250-1300H | M48 | 30 | 120 | 95 | 105 | 31 | 158 | 52 | 100 | 8 | 52 | 30 | 100 | 150 | 65 | 12 | 480 | 115 |
| 1350-1400H | M48 | 30 | 120 | 95 | 110 | 31 | 165 | 52 | 107 | 8 | 52 | 30 | 100 | 150 | 65 | 12 | 480 | 120 |
| 1450-1500H | M48 | 30 | 135 | 110 | 115 | 34 | 190 | 52 | 122 | 10 | 52 | 40 | 105 | 165 | 78 | 16 | 480 | 135 |
| 1550-1600H | M56 | 35 | 135 | 110 | 115 | 40 | 207 | 60 | 137 | 10 | 60 | 40 | 105 | 165 | 78 | 16 | 560 | 140 |